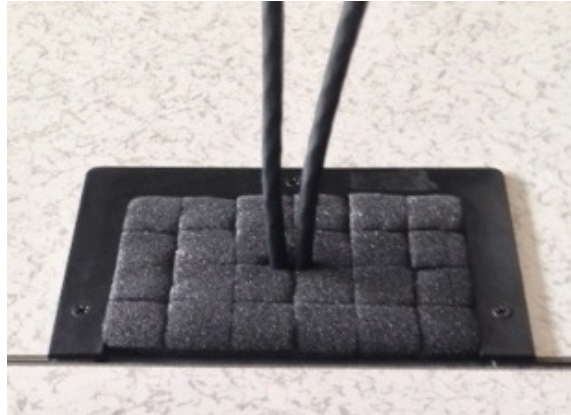


## GT006GK Installation Guide



### Step 1:

Cut floor opening to size 6 <sup>1</sup>/<sub>4</sub> " X 4 <sup>1</sup>/<sub>8</sub> "

### Step 2:

Install cable guard frame using self tapping screws.

### Step 3:

Install Air-Bloxx foam into frame (press fit) or with adhesive strip located on inside of frame. Remove perforated foam cubes as required for cable installation.